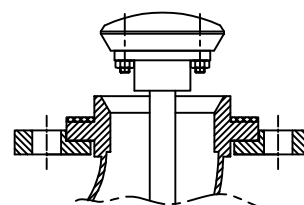
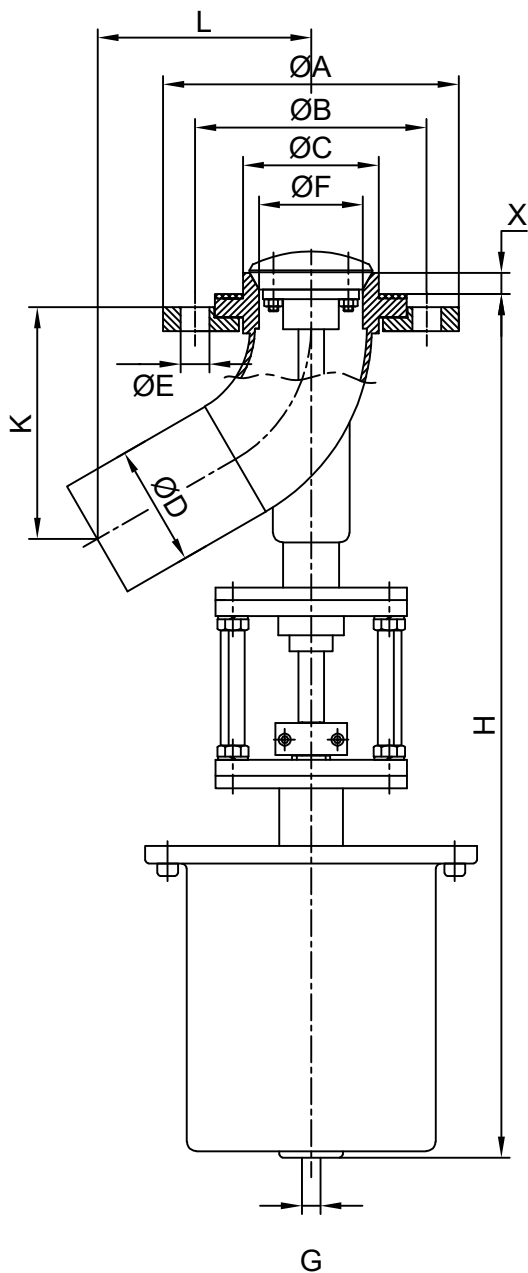


# STAINLESS STEEL BUTT WELDED ENDS & FLANGED PNEUMATIC ON-OFF TANK BOTTOM VALVE OPENING INTO TANK TYPE

**SERIES : 605**



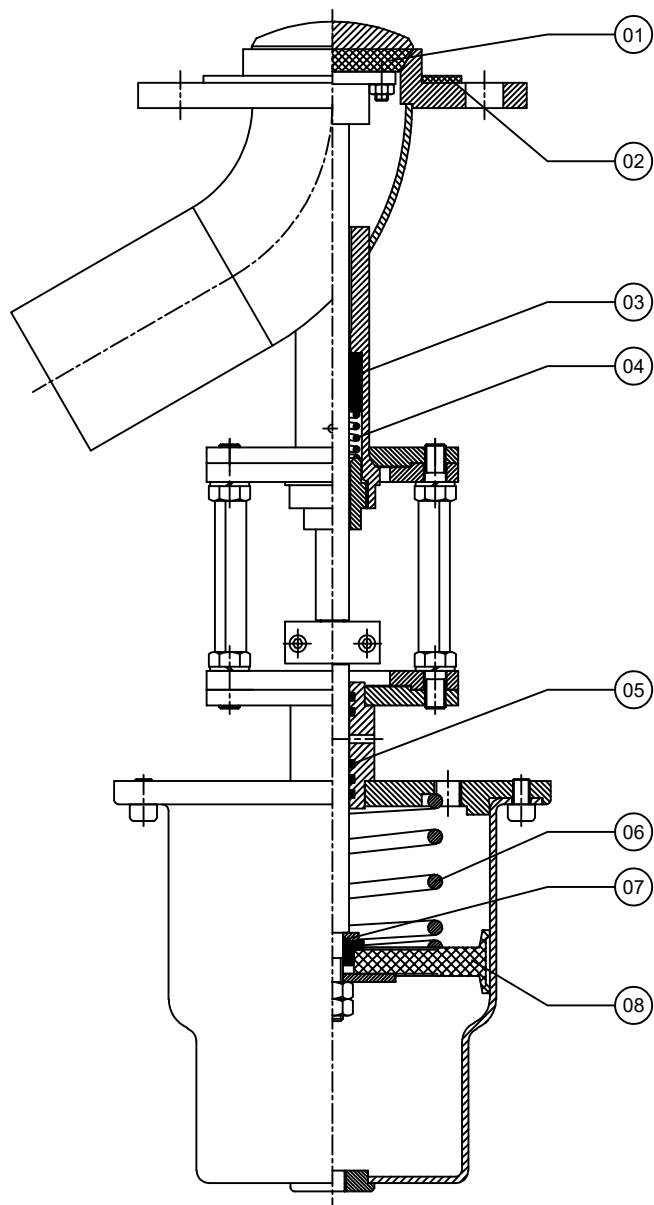
Stroke position

Working Pressure : Maximum 16 bar  
Working Temperature : -10°C / 220°C

DN		PISTON	$\Delta p_{bar}$	$\varnothing A$	$\varnothing B$	$\varnothing C$	$\varnothing D$	$\varnothing F$	$\varnothing E$	Holes	H	K	L	X	G	S
25	1"			Ø 100	8	115	85	50	33.7	29	14	4	405	95	88	16
32	1 1/4"	8	140		100	57	42.4	36	18	4	418	115	110	16	G 1/8"	30
40	1 1/2"	6	150		110	60	48.3	44	18	4	428	123	115	16	G 1/8"	30
50	2"	6	165		125	75	60.3	51	18	4	446	135	125	16	G 1/8"	30
65	2 1/2"	Ø 150	6	185	145	85	76.1	65	18	4	536	158	135	17	G 1/4"	40
80	3"		6	200	160	102	88.9	80	18	8	560	173	145	17	G 1/4"	40
100	4"		4	220	180	122	114.3	100	18	8	596	208	165	18	G 1/4"	40
125	5"		4	250	210	152	139.7	125	18	8	620	227	180	20	G 1/4"	40
150	6"		4	285	240	177	168.3	150	22	8	655	260	200	20	G 1/4"	40

NOTE : "X" Dimension can be changed if needed. / Double acting actuator is recommended for vacuum-operated applications.





For the spare part orders, notifying us about the part number at the chart below and also the serial number on the valve are adequate.

SPARE PART LIST		
PART NO	PART NAME	MATERIAL
01	SEAT SEAL	PTFE
02	GASKET	PTFE
03	STUFFING BOX V-CHEVRON	PTFE
04	STUFFING BOX SPRING	INOX
05	STUFFING BOX O-RING	SILICONE
06	SPRING	STEEL
07	PISTON O-RING	NBR
08	PISTON	NBR

