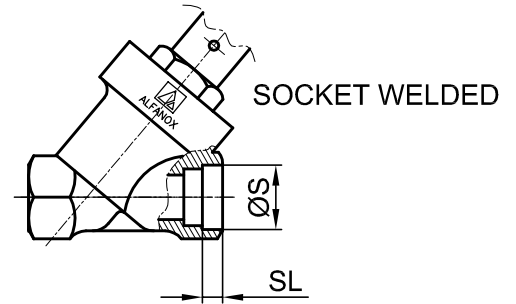
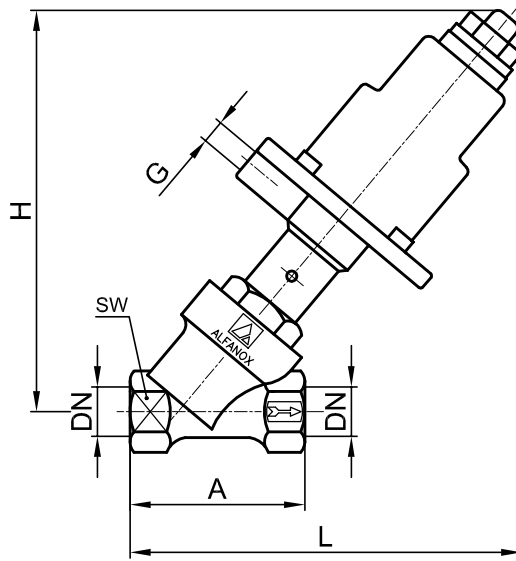


STAINLESS STEEL THREADED & SOCKET WELDED FREE FLOW / PNEUMATIC ON-OFF VALVE

SERIES : 401



APPLICATION

Controls the flow of fluid, steam or gas in the system with the applied pressure.(On-off motion)

SIZES

DN 15 (1/2") / DN 50 (2")

WORKING CHARACTERISTICS

Working pressure (Δp) : Check the chart. (If you need higher working pressures let us know)

Maximum working pressure: 40 bar

Control type: NC - Normally Closed (Standard)

NO - Normally Open (Optional)

DA - Double Acting (Optional)

Control pressure : Minimum 5 bar - Maximum 10 bar

(You can optionally chose lower control pressures)

Fluid temperature : -10°C / 220°C"

Control air temperature : -10°C / 60°C

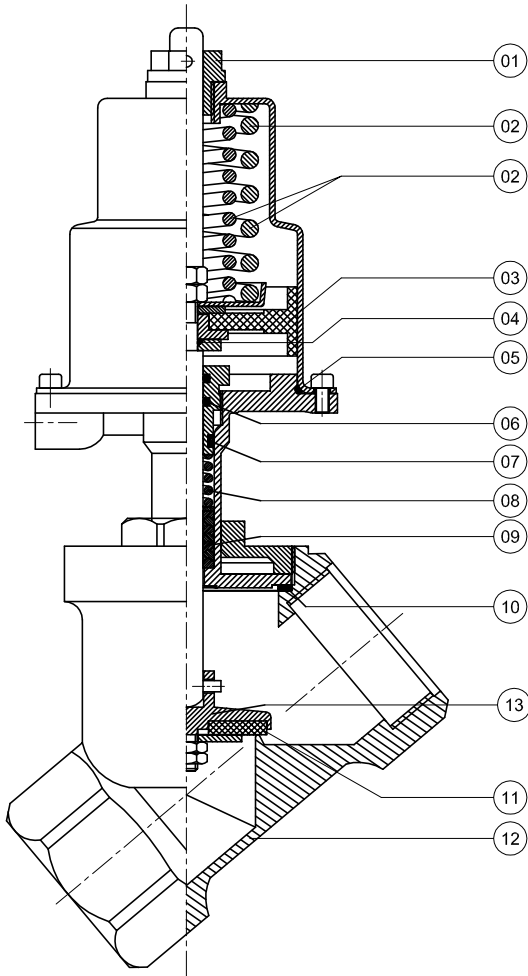
Connection type : Threaded or Socket welded

Connection position : On the direction of the arrow / Can be connected horizontally or vertically

DN	PISTON	Δp bar	A	L	H	G	SW	ØS	SL	KV m ³ /h	WEIGHT (KG)	
15	1/2"	Ø 50	65	160	165	G 1/8"	27	21,5	6	4,9	1,40	
		Ø 63		170	175						1,70	
20	3/4"	Ø 50	75	165	165		32	26,9		7,6	1,50	
		Ø 63		175	175							1,80
25	1"	Ø 50	90	170	170		39	33,6		13,7	2,00	
		Ø 63		180	185							2,60
		Ø 80		195	190							2,60
32	1 1/4"	Ø 63	110	200	195		50	42,7		20,7	3,20	
		Ø 80		215	205							4,40
		Ø 100		235	225							2,90
40	1 1/2"	Ø 63	120	205	200		55	48,6		34,2	4,70	
		Ø 80		220	210							4,40
		Ø 100		240	230	5,50						
50	2"	Ø 80	150	230	220	68	60,6	48,6	8,90			
		Ø 100		250	240					8,90		
		Ø 125		310	290							



ALFANOX



INSTRUCTIONS :

1. Valve can be fitted in any position.
2. Flow direction should be as indicated by an arrow on the body.
3. Working pressure for each size of valve should not exceed the limits indicated in the chart.
4. Control pressure should not exceed the maximum and should not go lower than the minimum value.
5. CAUTION : Never fasten or remove the assembly nut prior to applying pressurized air.

For the spare part orders, notifying us about the part number at the chart below and also the serial number on the valve are adequate.

SPARE PART LIST		
PART NO	PART NAME	MATERIAL
01	UPPER SPINDLE GUIDE	NYLON 66
02	SPRING (SINGLE)	INOX
02	SPRING (DOUBLE)	INOX
02	SPRING (DOUBLE)	STEEL
03	PISTON GROUP	NBR+BRASS
04	PISTON O-RING	NBR
05	CYLINDER O-RING	SILICONE
06	STUFFING BOX O-RING	SILICONE
07	STUFFING BOX GASKET	SILICONE
08	STUFFING BOX SPRING	INOX
09	STUFFING BOX V-CHEVRON	PTFE
10	BODY SEALING GASKET	PTFE / SILICONE
11	SEAT SEAL	EPDM / PTFE / VITON
12	VALVE BODY	AISI 316
13	SEAT SEAL HOLDER	AISI 316

