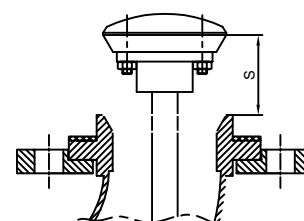
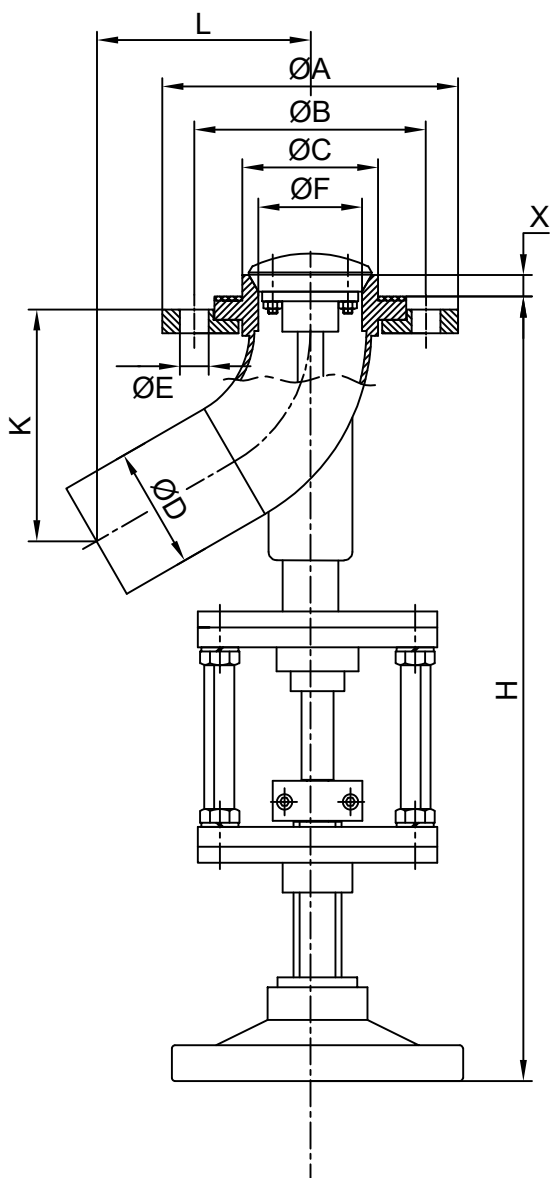


**STAINLESS STEEL
BUTT WELDED ENDS & FLANGED
MANUAL OPERATED TANK BOTTOM VALVE
OPENING INTO TANK TYPE**

SERIES: 604



Stroke position

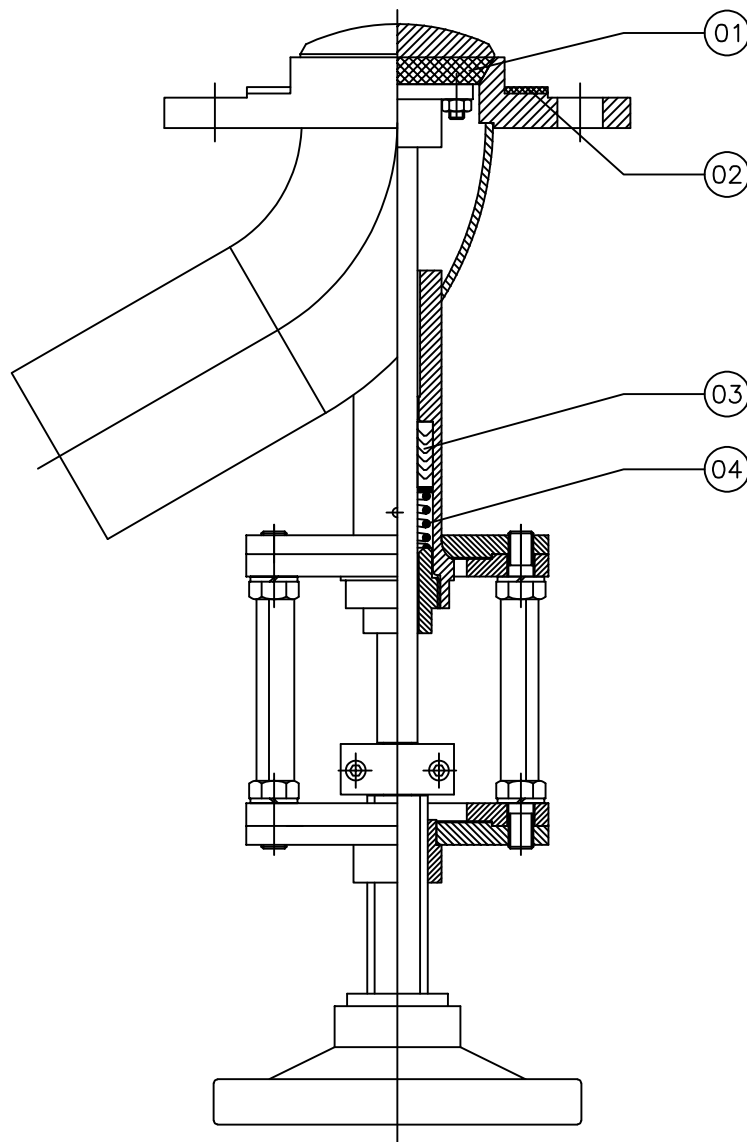
Working Pressure : Maximum 16 bar
Working Temperature : -10°C / 220°C

DN		ØA	ØB	ØC	ØD	ØE	Holes	H	K	L	X	S
25	1"	115	85	50	33.7	14	4	320	95	88	16	30
32	1 1/4"	140	100	57	42.4	18	4	334	114	110	16	30
40	1 1/2"	150	110	60	48.3	18	4	344	123	115	16	30
50	2"	165	125	75	60.3	18	4	363	135	125	16	30
65	2 1/2"	185	145	85	76.1	18	4	426	157	135	17	40
80	3"	200	160	102	88.9	18	8	450	173	145	17	40
100	4"	220	180	122	114.3	18	8	487	207	165	18	40
125	5"	250	210	152	139.7	18	8	530	227	180	20	40
150	6"	285	240	177	168.3	22	8	570	260	200	20	40

NOTE : "X" Dimension can be changed if needed. / Double acting actuator is recommended for vacuum-operated applications.



ALFANOX



For the spare part orders, notifying us about the part number at the chart below and also the serial number on the valve are adequate.

SPARE PARTS LIST		
PART NO	PART NAME	MATERIAL
01	SEAT SEAL	PTFE
02	TOP FLANGE GASKET	PTFE
03	STUFFING BOX V-CHEVRON	PTFE
04	STUFFING BOX SPRING	INOX

