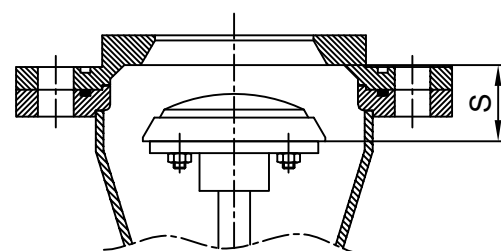
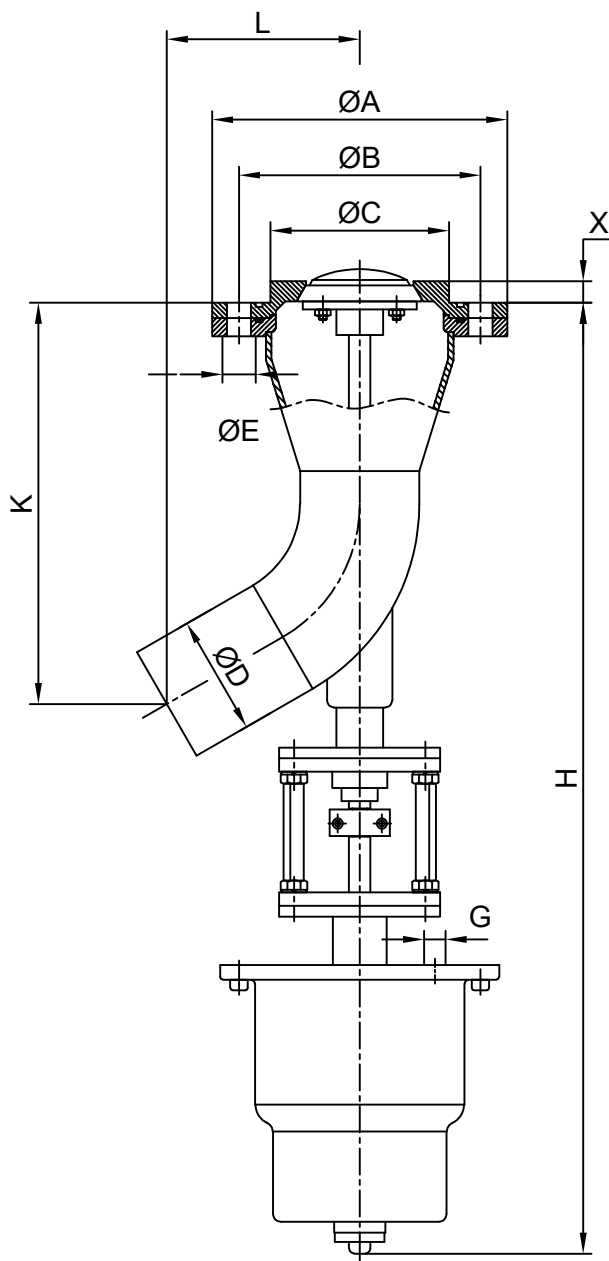


**STAINLESS STEEL  
BUTT WELDED ENDS & FLANGED  
PNEUMATIC ON-OFF TANK BOTTOM VALVE  
OPENING INTO VALVE TYPE**

**SERIES : 615**



Stroke Position

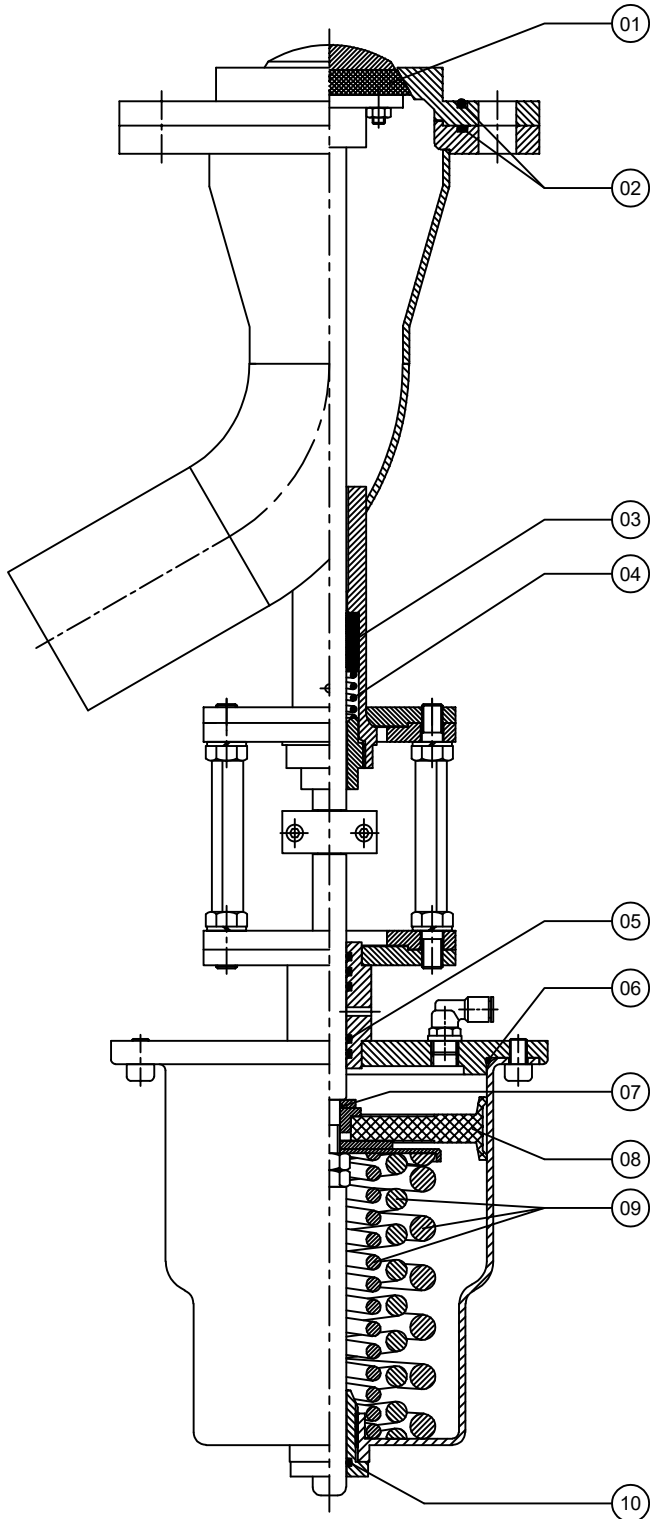
DN		PISTON	$\Delta p$ bar	$\varnothing A$	$\varnothing B$	$\varnothing C$	$\varnothing D$	$\varnothing E$	Holes	H	K	L	X	G	S
25	1"	Ø 100	20	140	100	57	33.7	14	4	503	176	88	16	G 1/8"	30
32	1 1/4"		15	150	110	70	42.4	18	4	530	208	110	18	G 1/8"	30
40	1 1/2"		10	165	125	75	48.3	18	4	542	220	115	18	G 1/8"	30
50	2"		7	185	145	90	60.3	18	4	572	243	125	18	G 1/8"	30
65	2 1/2"	Ø 150	7	200	160	108	76.1	18	8	695	265	135	20	G 1/4"	40
80	3"		5	220	180	133	88.9	18	8	725	307	145	20	G 1/4"	40
100	4"		3	250	210	158	114.3	18	8	740	352	165	22	G 1/4"	40
125	5"		2	285	240	188	139.7	22	8	795	380	180	22	G 1/4"	40
150	6"		1.5	340	295	228	168.3	22	12	885	410	200	22	G 1/4"	40

NOTE : "X" Dimension can be changed if needed. / Double acting actuator is recommended for vacuum-operated applications.



ALFANOX

KE 615 A5



For the spare part orders, notifying us about the part number at the chart below and also the serial number on the valve are adequate.

SPARE PART LIST		
PART NO	PART NAME	MATERIAL
01	SEAT SEAL	PTFE
02	FLANGE O-RING	SILICONE
03	STUFFING BOX V-CHEVRON	PTFE
04	STUFFING BOX SPRING	INOX
05	STUFFING BOX O'RING	SILICONE
06	CYLINDER O'RING	SILICONE
07	PISTON O'RING	NBR
08	PISTON	NBR
09	SPRING (TRIPLE)	STEEL
10	UPPER SPINDLE -RING	SILICONE

