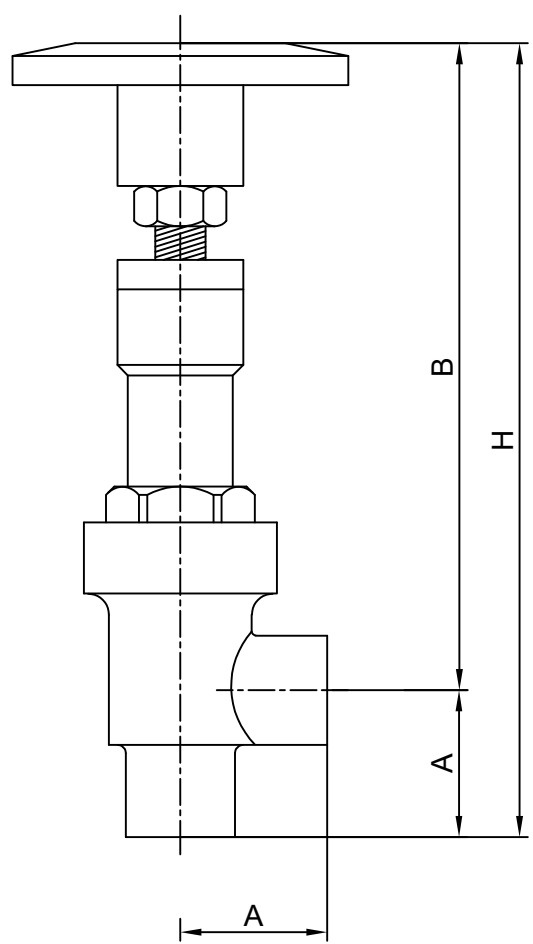


**STAINLESS STEEL MANUAL VALVE
 SOCKET WELDED
 VERTICAL FLOW (90°)**

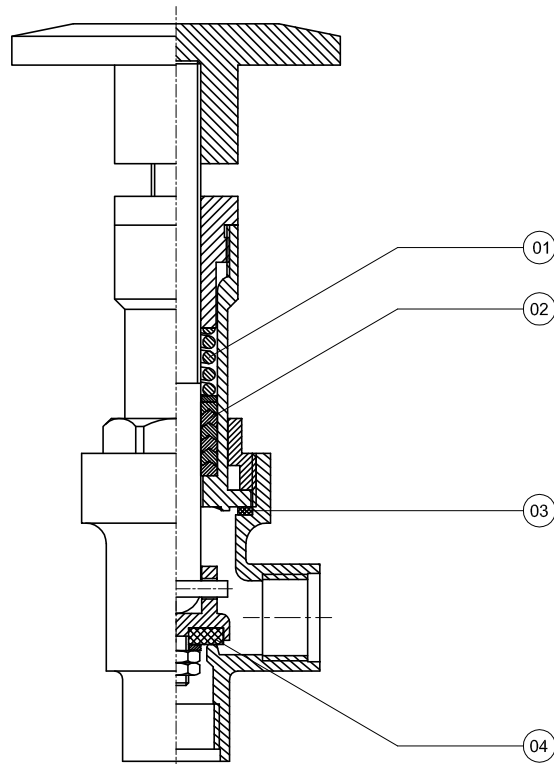
SERIES : 420



DN	BSP	A	B	H	Kv m ³ /h
15	1/2"	35	145	180	4,9
20	3/4"	40	145	185	7,6
25	1"	45	145	190	13,7
32	1 1/4"	55	150	205	20,7
40	1 1/2"	60	150	210	34,2
50	2"	70	155	225	48,6

INSTRUCTIONS :

1. Valve can be fitted in any position.
2. Flow direction should be as indicated by an arrow on the body.
3. CAUTION : Never fasten or remove the assembly nut prior to turning the handwheel to the opening direction.



For the spare part orders, notifying us about the part number at the chart below and also the serial number on the valve are adequate.

SPARE PART LIST		
PART NO	PART NAME	MATERIAL
01	STUFFING BOX SPRING	INOX
02	STUFFING BOX V-CHEVRON	PTFE
03	BODY SEALING GASKET	PTFE / SILICONE
04	SEAT SEAL	EPDM / PTFE / VITON

