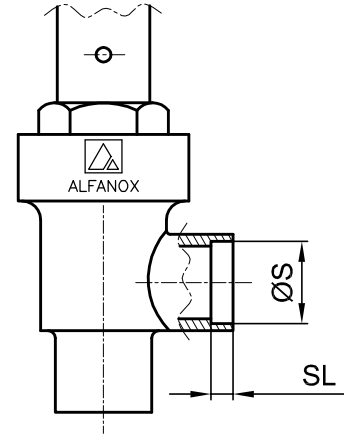
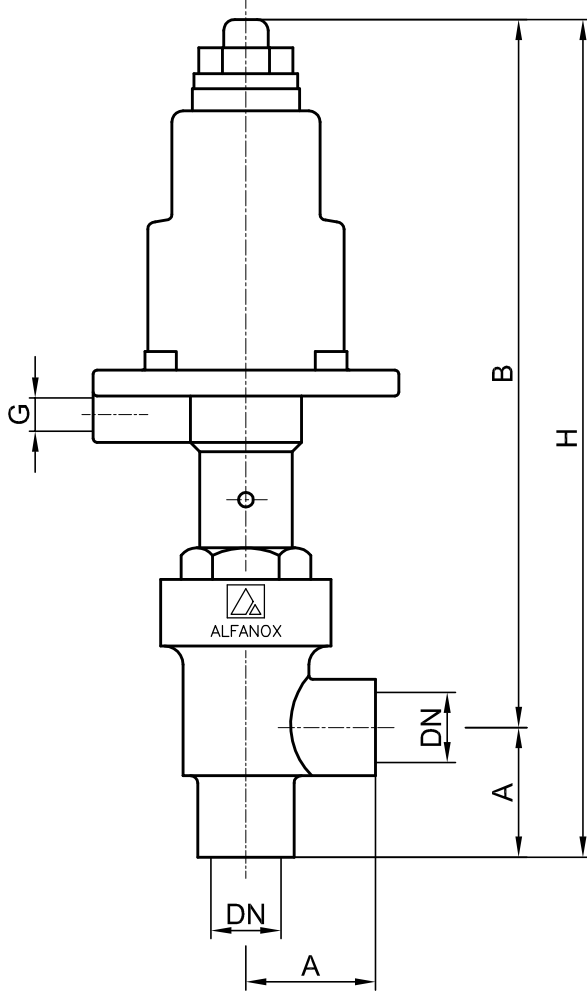


PASLANMAZ ÇELİK PNÖMATİK ON-OFF VANA
DİŞLİ & KAYNAK SOKETLİ
DİK GEÇİŞLİ (90°)

SERİ : 402



KAYNAK SOKETLİ

DN		PISTON	Δp bar	A	B	H	G	ØS	SL	Kv m ³ /h	AĞIRLIK (KG)
15	1/2"	Ø 50	21	35	195	230	G 1/8"	21,5	6	4,9	1,30
		Ø 63	33		210	245					1,60
20	3/4"	Ø 50	12	40	195	235		26,9		7,6	1,50
		Ø 63	27		210	250					1,70
25	1"	Ø 50	7	45	195	240		33,9		13,7	1,60
		Ø 63	12		210	255					2,00
		Ø 80	27		225	270					2,60
32	1 1/4"	Ø 63	7	55	215	270		42,7		20,7	2,40
		Ø 80	12		235	290	3,00				
		Ø 100	26		255	310	4,20				
40	1 1/2"	Ø 63	5	60	220	280	48,6	34,2	2,80		
		Ø 80	8		240	300			3,50		
		Ø 100	16		260	320			4,60		
50	2"	Ø 80	5	70	245	315	60,6	48,6	3,90		
		Ø 100	10		265	335			5,00		



ALFANOX