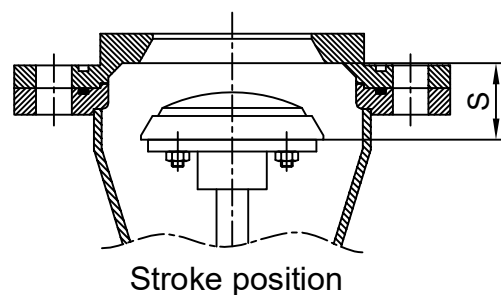
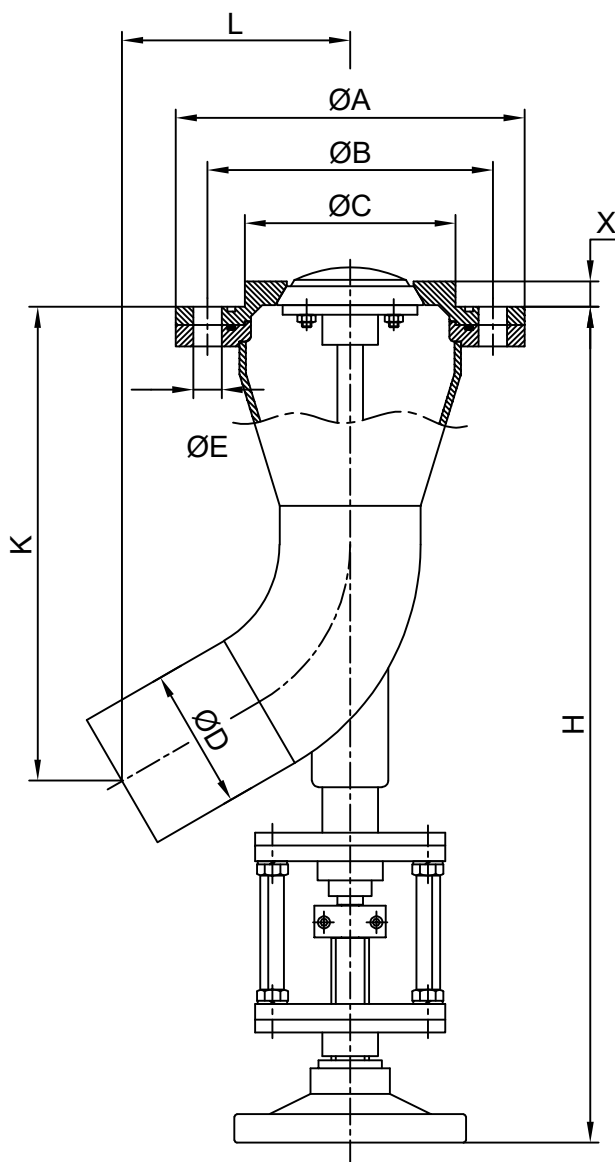


**STAINLESS STEEL
BUTT WELDED ENDS & FLANGED
MANUAL OPERATED TANK BOTTOM VALVE
OPENING INTO VALVE TYPE**

SERİ : 614



Working Pressure : Maximum 16 bar
Working Temperature : -10°C / 220°C

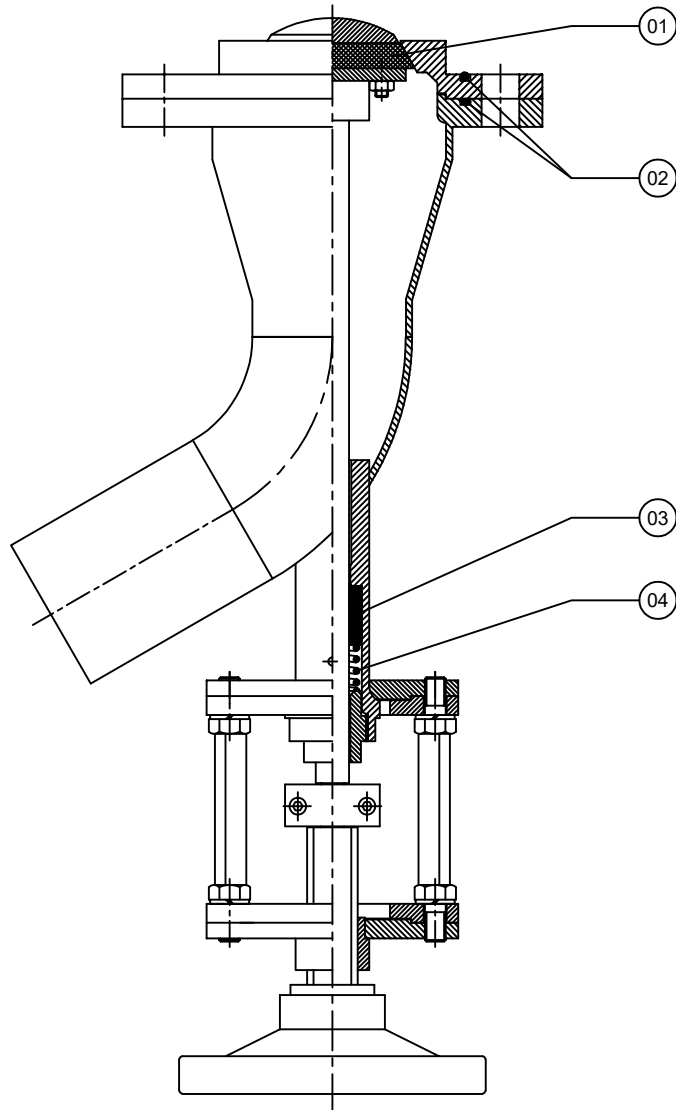
DN		ØA	ØB	ØC	ØD	ØE	Holes	H	K	L	X	S
25	1"	140	100	57	33.7	14	4	402	167	88	16	30
32	1 1/4"	165	125	70	42.4	18	4	428	208	110	18	30
40	1 1/2"	165	125	75	48.3	18	4	440	220	115	18	30
50	2"	185	145	90	60.3	18	4	465	243	125	18	30
65	2 1/2"	200	160	108	76.1	18	8	534	264	135	20	40
80	3"	220	180	133	88.9	18	8	582	307	145	20	40
100	4"	250	210	158	114.3	18	8	631	352	165	22	40
125	5"	285	240	188	139.7	22	8	665	370	180	22	40
150	6"	340	295	228	168.3	22	12	705	410	200	22	40

NOTE : "X" Dimension can be changed if needed. / Double acting actuator is recommended for vacuum-operated applications.



ALFANOX

KE 614 A5



For the spare part orders, notifying us about the part number at the chart below and also the serial number on the valve are adequate.

SPARE PART LIST		
PART NO	PART NAME	MATERIAL
01	SEAT SEAL	PTFE
02	O-RING	SILICONE
03	STUFFING BOX V-CHEVRON	PTFE
04	STUFFING BOX SPRING	INOX

