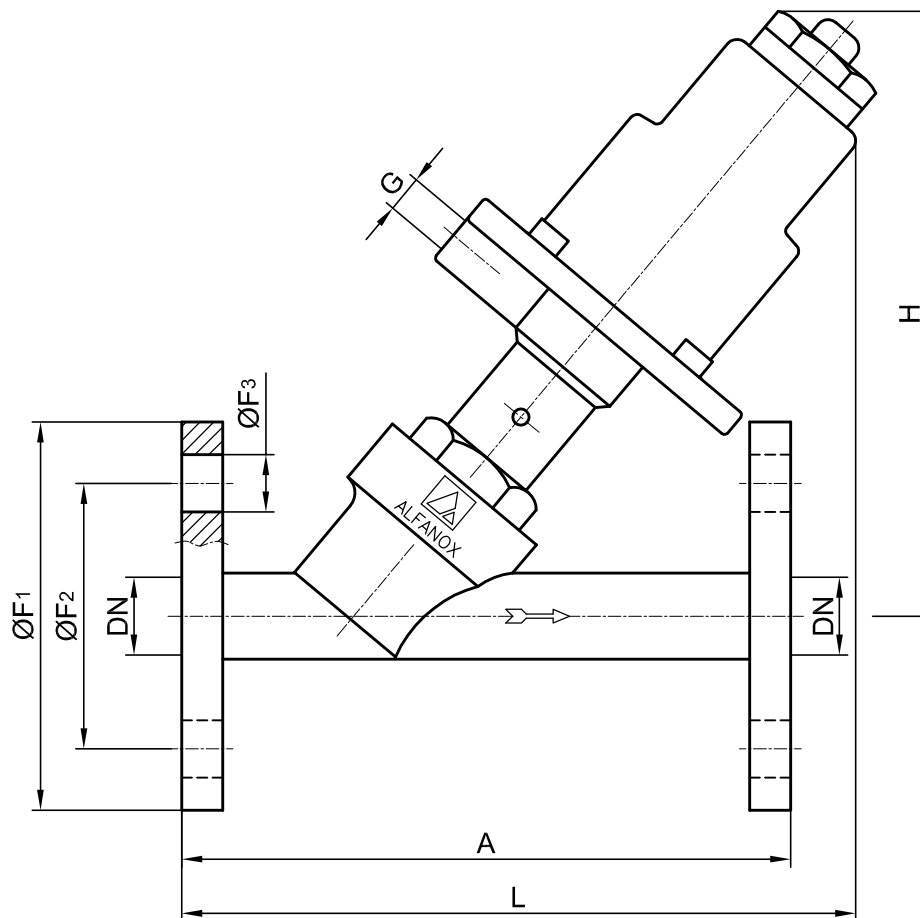
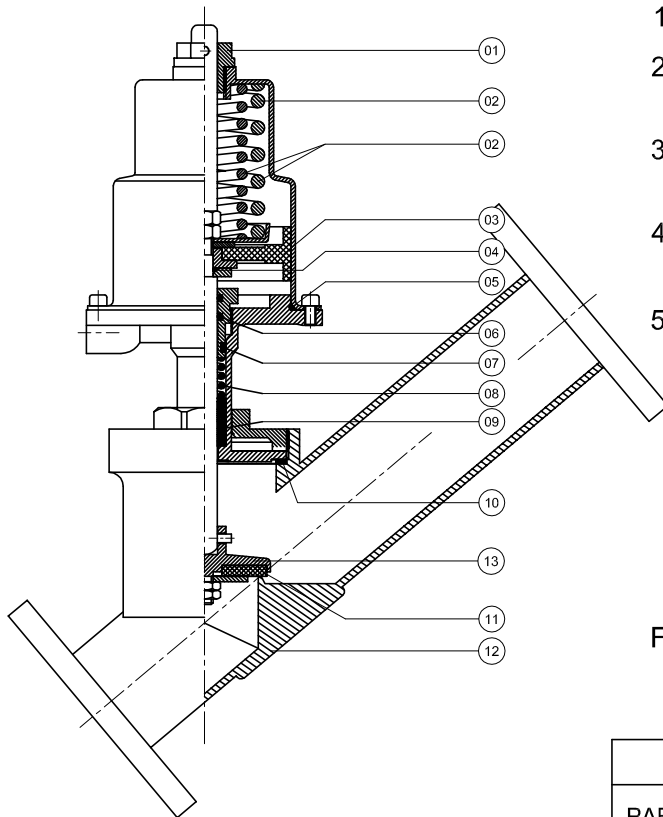


**ON-OFF PNEUMATIC PISTON OPERATED  
PN 16 FLANGED / NORMALLY CLOSED  
STAINLESS STEEL ANGLE VALVE**



DN		PISTON		$\Delta p$ bar	A	L	H	G	ØF1	ØF2	ØF3	Holes	Kv m <sup>3</sup> /h	
15	1/2"	Ø 50	21	21	130	176	162	G 1/4"	95	65	14	4	4,9	
		Ø 63	33			186	174							
20	3/4"	Ø 50	12	12	150	168	162		105	75			14	7,6
		Ø 63	27			178	174							
25	1"	Ø 50	7	7	160	177	168		115	85			14	13,7
		Ø 63	12			187	179							
		Ø 80	27			213	207							
32	1 1/4"	Ø 63	7	7	180	198	187		140	100	18		20,7	
		Ø 80	12			211	199							
		Ø 100	26			251	238							
40	1 1/2"	Ø 63	5	5	200	208	194		150	110			18	34,2
		Ø 80	8			221	207							
		Ø 100	16			261	248							
50	2"	Ø 80	5	5	230	231	213	165	125	18	48,6			
		Ø 100	10			251	230							





## INSTRUCTIONS :

1. Valve can be fitted in any position.
2. Flow direction should be as indicated by an arrow on the body.
3. Working pressure for each size of valve should not be exceed the limits indicated in the chart.
4. Control pressure should not exceed the maximum and should not go lower then the minimum value.
5. CAUTION : Never fasten or remove the assembly nut prior to applying pressurized air.

For the spare part orders, notifying us about the part number at the chart below and also the serial number on the valve are adequate.

### SPARE PART LIST

PART NO	PART NAME	MATERIAL
01	UPPER SPINDLE GUIDE	NYLON 66
02	SPRING (SINGLE)	INOX
02	SPRING (DOUBLE)	INOX
02	SPRING (DOUBLE)	STEEL
03	PISTON GROUP	NBR+BRASS
04	PISTON O-RING	NBR
05	CYLINDER O-RING	SILICONE
06	STUFFING BOX O-RING	SILICONE
07	STUFFING BOX GASKET	SILICONE
08	STUFFING BOX SPRING	INOX
09	STUFFING BOX V-CHEVRON	PTFE
10	BODY SEALING GASKET	PTFE / SILICONE
11	SEAT SEAL	EPDM / PTFE / VITON
12	VALVE BODY	AISI 316
13	SEAT SEAL HOLDER	AISI 316

