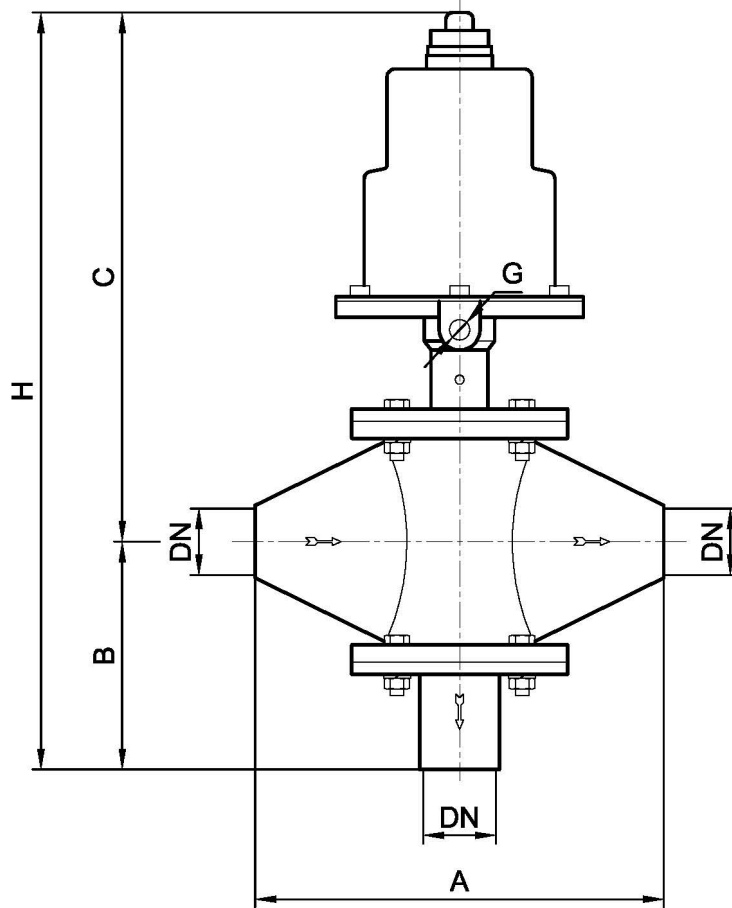


**STAINLESS STEEL
BUTT WELDED & FLANGED
THREE WAY / PNEUMATIC ON-OFF VALVE**

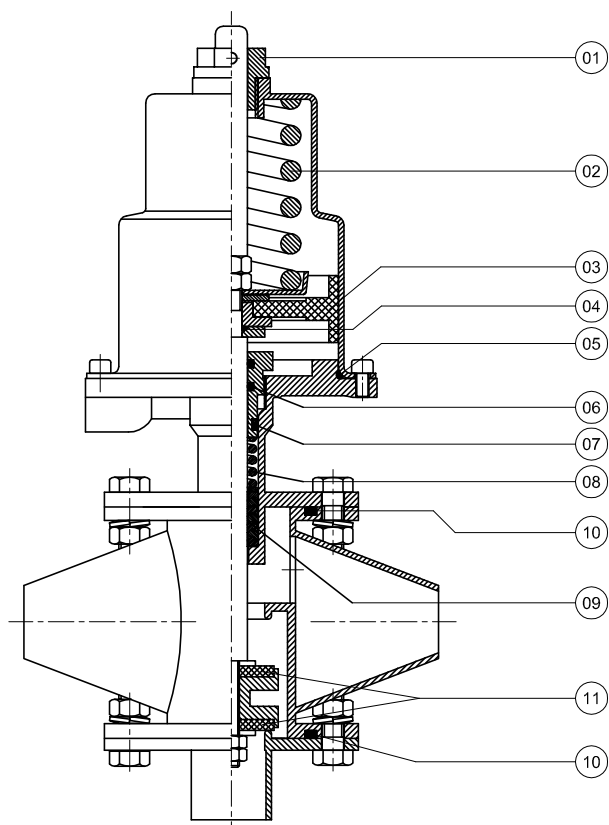
SERIES : 503



| DN | | PISTON | A | B | C | H | G | Kv m ³ /h | WEIGHT (KG) |
|----|--------|--------|------|-----|-----|-----|------|-------------------------|----------------|
| 15 | 1/2" | | Ø 63 | 145 | 60 | 180 | | 240 | G 1/8" |
| 20 | 3/4" | 145 | | 65 | 190 | 255 | 6,5 | 3,00 | |
| 25 | 1" | Ø 80 | 155 | 75 | 210 | 285 | 11,8 | 3,20 | |
| 32 | 1 1/4" | | 175 | 100 | 220 | 320 | 17,8 | 4,00 | |
| 40 | 1 1/2" | Ø 100 | 195 | 110 | 250 | 360 | 29,3 | 6,30 | |
| 50 | 2" | | 225 | 125 | 260 | 385 | 41,7 | 6,80 | |



ALFANOX



INSTRUCTIONS :

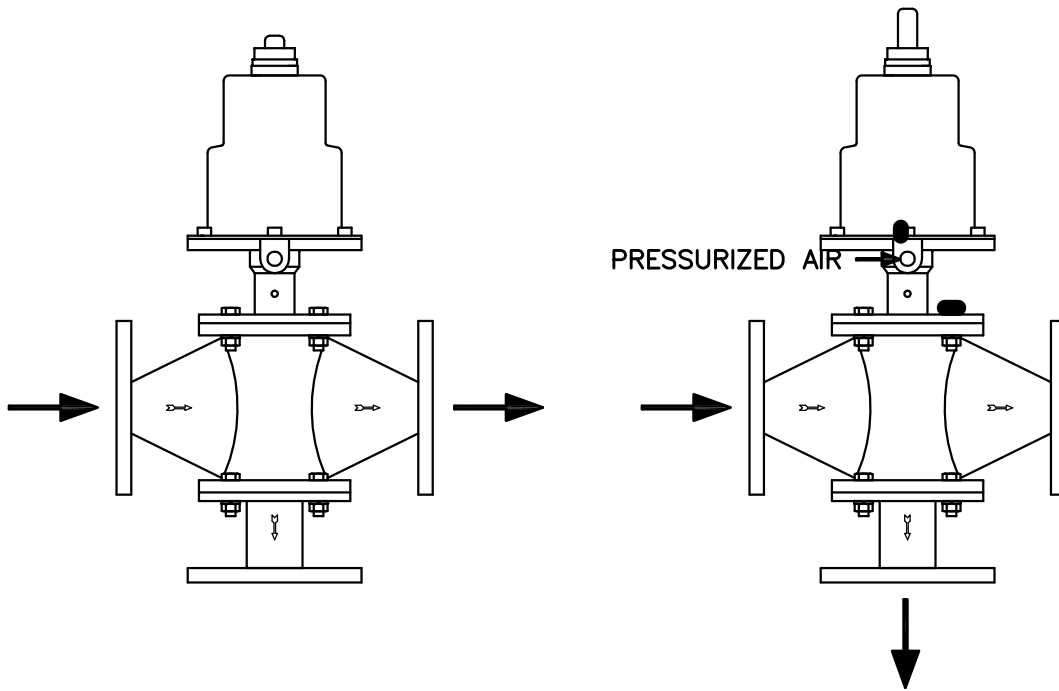
1. Valve can be fitted in any position.
2. Flow direction should be as indicated by an arrow on the body.
3. Working pressure for each size of valve should not be exceed the limits indicated in the chart.
4. Control pressure should not exceed the maximum and should not go lower then the minimum value.
5. CAUTION : Never fasten or remove the bolts & nuts prior to applying pressurized air.

For the spare part orders, notifying us about the part number at the chart below and also the serial number on the valve are adequate.

| SPARE PART LIST | | |
|-----------------|------------------------|---------------------|
| PART NO | PART NAME | MATERIAL |
| 01 | UPPER SPINDLE GUIDE | NYLON 66 |
| 02 | SPRING (SINGLE) | INOX |
| 03 | PISTON GROUP | NBR+BRASS |
| 04 | PISTON O-RING | NBR |
| 05 | CYLINDER O-RING | SILICONE |
| 06 | STUFFING BOX O-RING | SILICONE |
| 07 | STUFFING BOX GASKET | SILICONE |
| 08 | STUFFING BOX SPRING | INOX |
| 09 | STUFFING BOX V-CHEVRON | PTFE |
| 10 | BODY SEALING O-RING | NBR / SILICONE |
| 11 | SEAT SEAL | EPDM / PTFE / VITON |



NORMALLY CLOSED



NORMALLY OPEN

